



TAU difusores de solo em alumínio



MADEL®

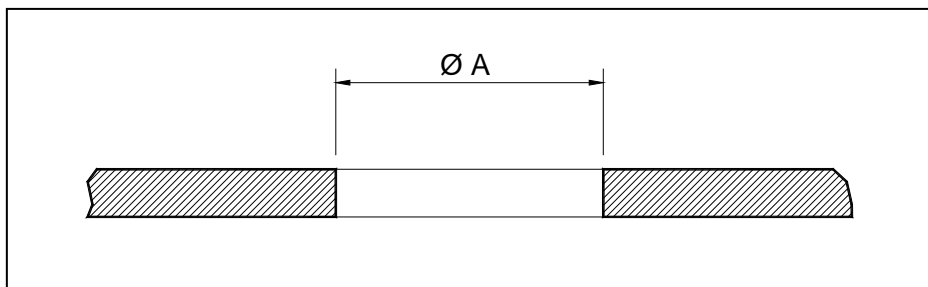
Os difusores de solo da série **TAU** foram concebidos para aplicação em teatros, auditórios, salas de espetáculos, salas de cinema, etc.

Difusor circular com regulador de caudal, coletor de pó e aro de montagem, para a sua instalação no solo ou debaixo de assentos.

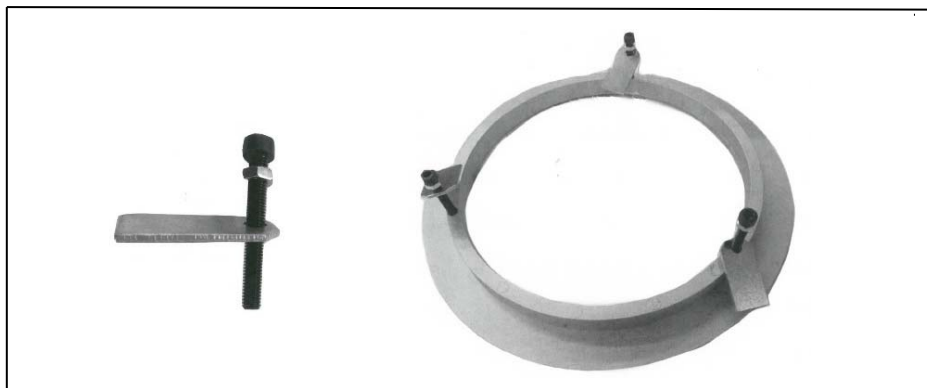
Estes difusores podem utilizar-se para um diferencial de temperatura de 6°C, obtendo boas prestações no nível de pressão sonora na zona de conforto.

Instrucciones de montaje

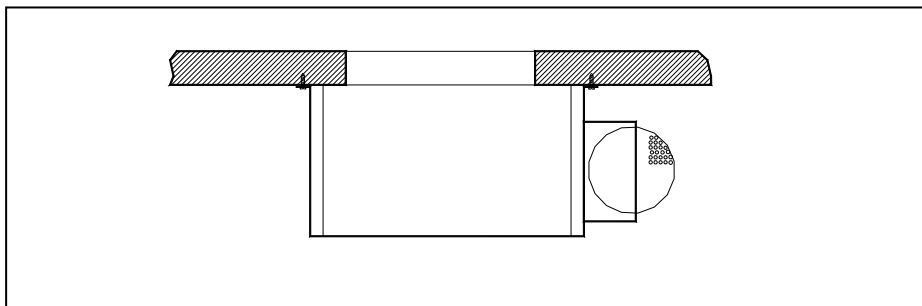
1.- Apertura de hueco de diámetro nominal. Cota A



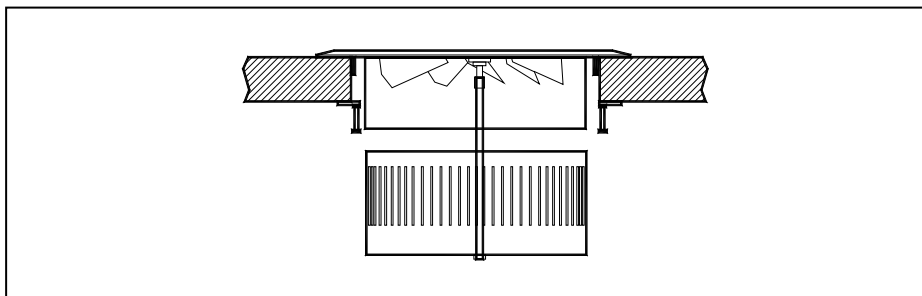
2.- Montar los tornillos en el marco de fijación



3.- En caso de usar plenum tipo PLAU, atornillarlo en la parte inferior del suelo



4.- Finalmente fijar el marco TAU con los tornillos y poner difusor





TAU - 150

MADEL®

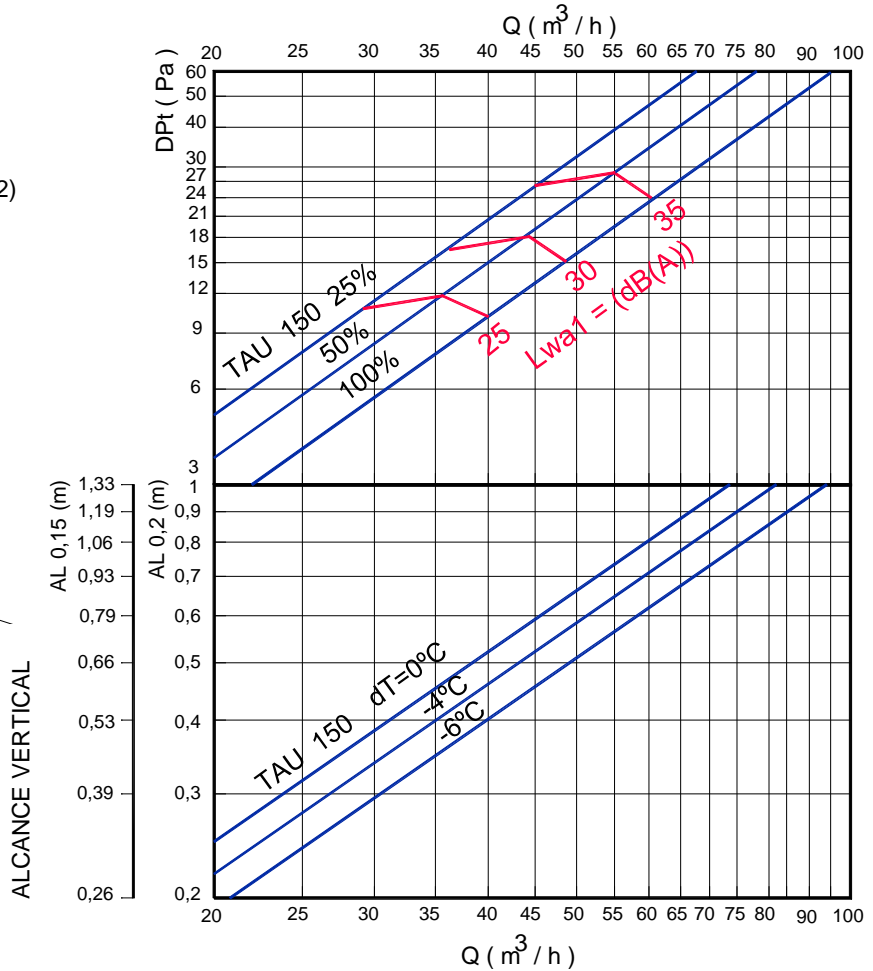
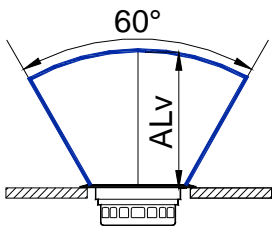
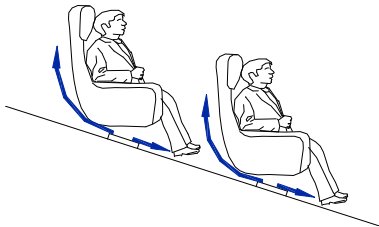
PERDIDA DE CARGA Y POTENCIA SONORA

VELOCIDAD RECOMENDADA

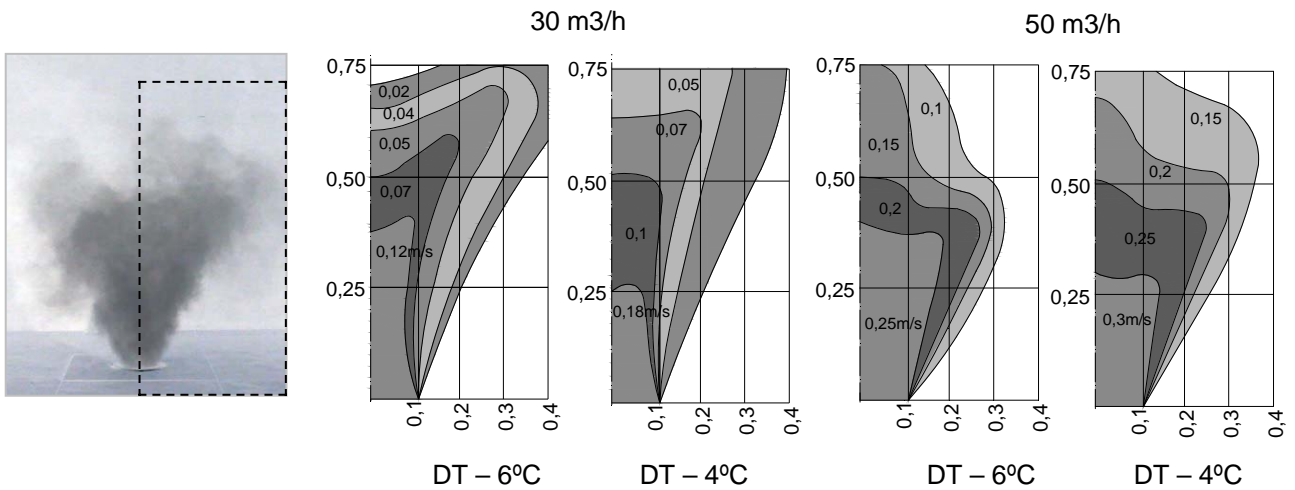
	min m/s	max m/s
	0,4	0,85

SECCION LIBRE SALIDA AIRE (m2)

	m2	min m3/h	max m3/h
150	0.018	30	57



Perfil de velocidad TAU 150



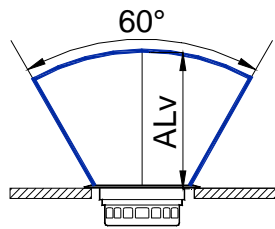
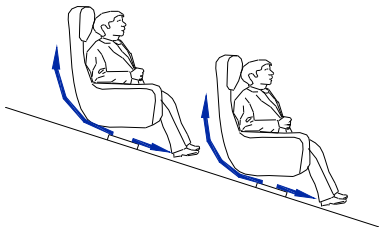


VELOCIDAD RECOMENDADA

	min m/s	max m/s
	0,4	0,85

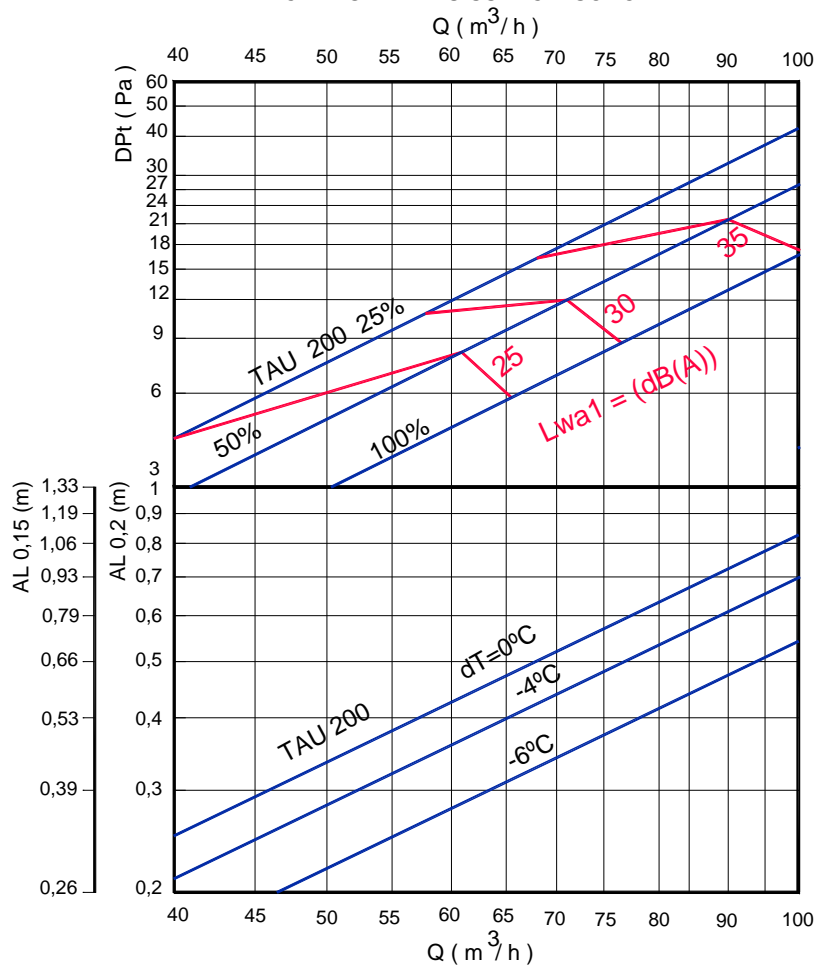
SECCION LIBRE SALIDA AIRE (m2)

	m2	min m3/h	max m3/h
200	0.0314	60	100

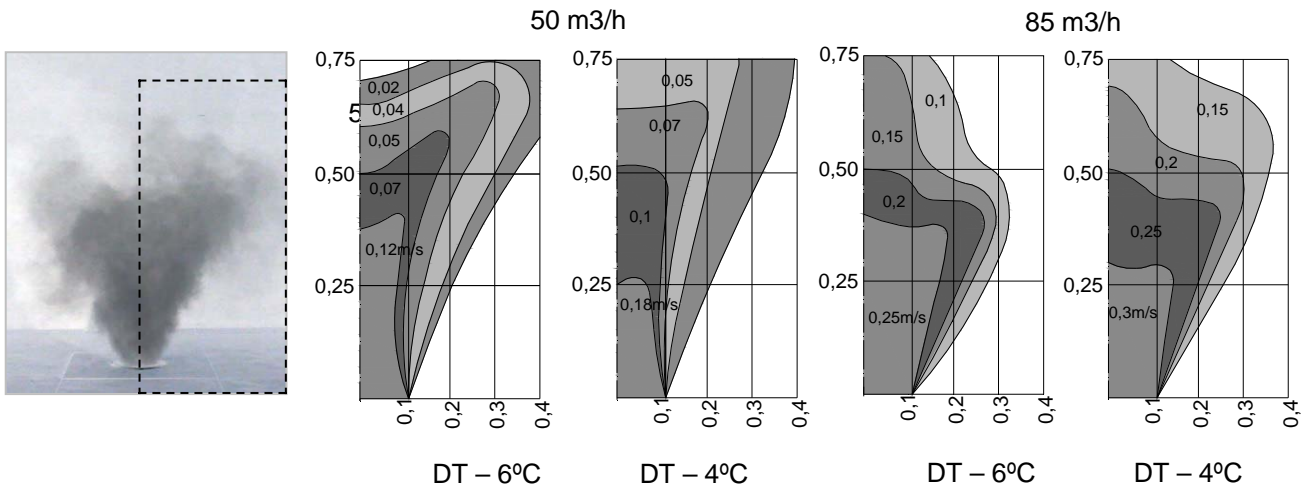


ALCANCE VERTICAL

PERDIDA DE CARGA Y POTENCIA SONORA



Perfil de velocidad TAU 200



Datos acusticos por bandas de octava



Figura 1 Conexión del conducto de aire a las gradas



Figura 2 Modelo de gradas con 8 difusores

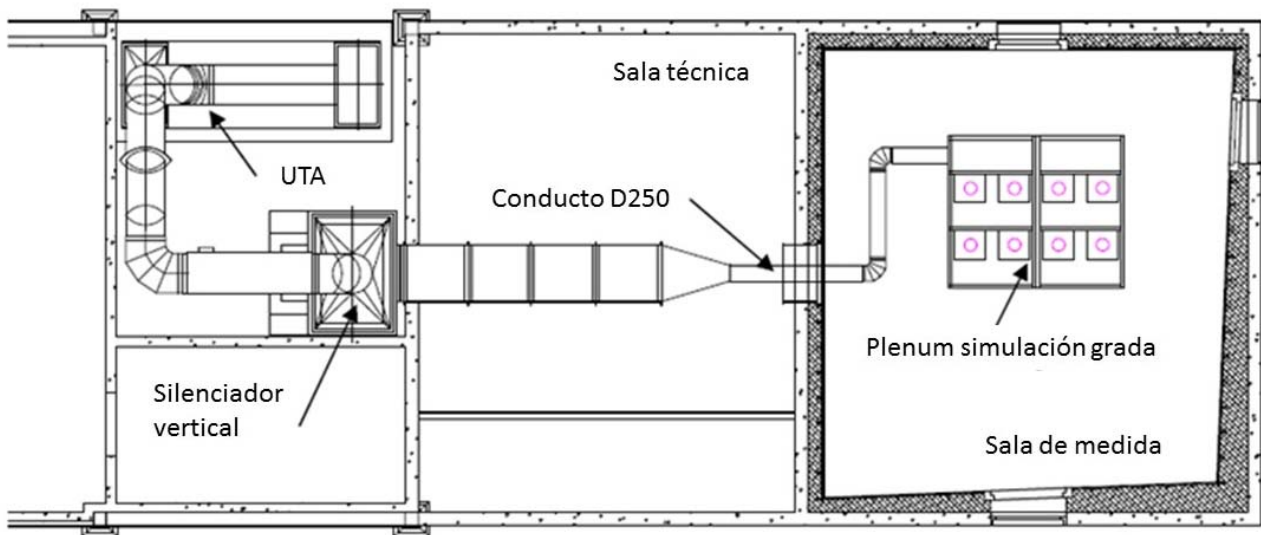


Figura 3 Esquema de principio

TAU- 150

Q	Sound power level in dB (A). Octava band centre frequency in Hz											Pa
m3/h	63	125	250	500	1000	2000	4000	8000	GLOBAL	NC	NR	Dpt
30	<8	8	15	17	13	6	<8	2	20	15	20	5
40	5	13	20	22	18	11	5	7	25	20	25	10
50	12	20	27	29	25	18	12	14	32	30	30	16
60	15	23	30	32	28	21	15	17	35	30	35	23

TAU-200

Q	Sound power level in dB (A). Octava band centre frequency in Hz											Pa
m3/h	63	125	250	500	1000	2000	4000	8000	GLOBAL	NC	NR	Dpt
60	7	11	17	17	13	5	4	7	22	20	20	5
75	14	18	24	24	20	12	11	14	29	25	30	8
90	18	22	28	28	24	16	15	18	33	30	35	13
100	21	25	31	31	27	19	18	21	36	35	35	17