



TAU Bodendiffusoren aus Aluminium



MADEL®

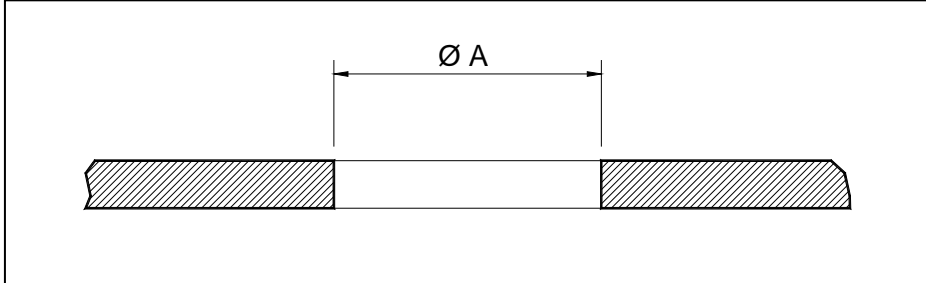
Die Diffusoren der Serie **TAU** sind für den Einsatz in Theater-, Konzert-, Kinosälen etc. vorgesehen.

Runder Diffusor mit Volumenstromregler, Staubfänger und Montagering zur Installation am Boden oder unter Sitzen.

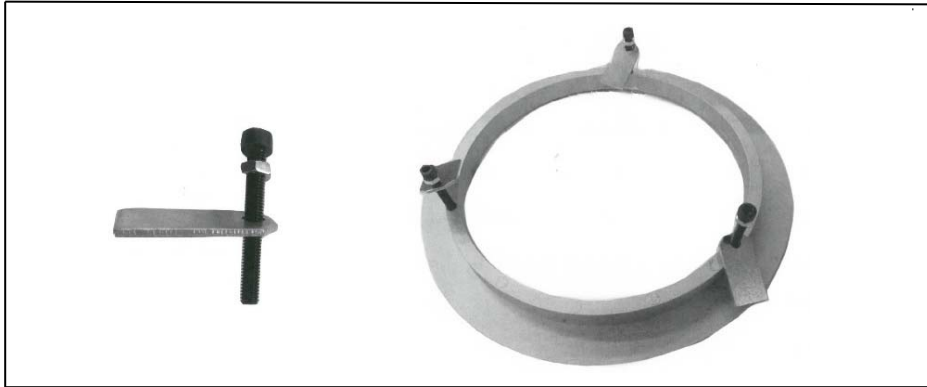
Diese Diffusoren sind für ein Temperaturdifferenzial von 6°C geeignet, wobei sie hinsichtlich des Schallpegels im Komfortbereich hervorragende Leistungsmerkmale bieten.

Assembly instructions

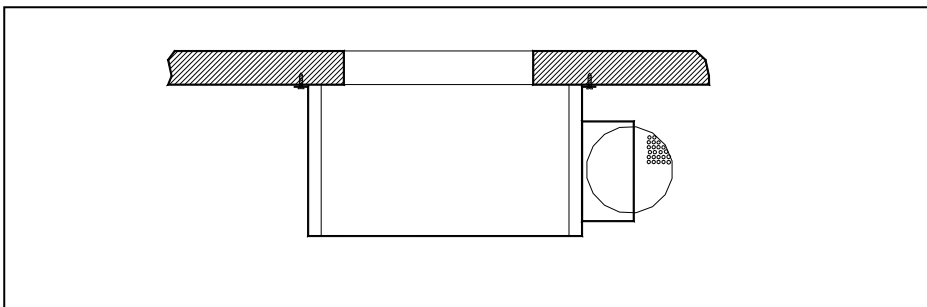
1.- Nominal diameter concrete slab opening :



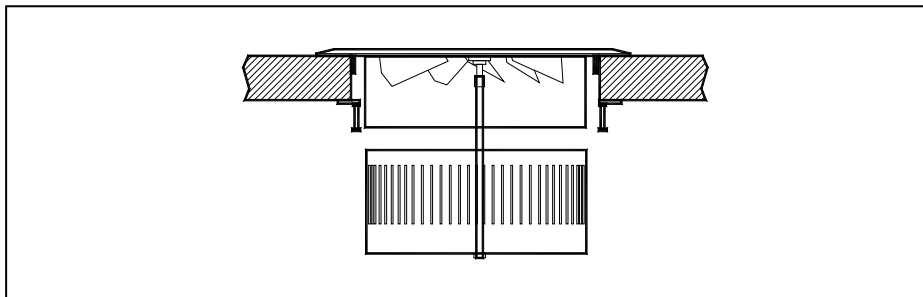
2.- Fit the screws on the mounting frame :



3.- When using a PLAU type plenum, screw it onto the lower part of the concrete slab :



4.- Finally fix the frame of the TAU, screw and place the diffuser :





TAU - 150

MADEL®

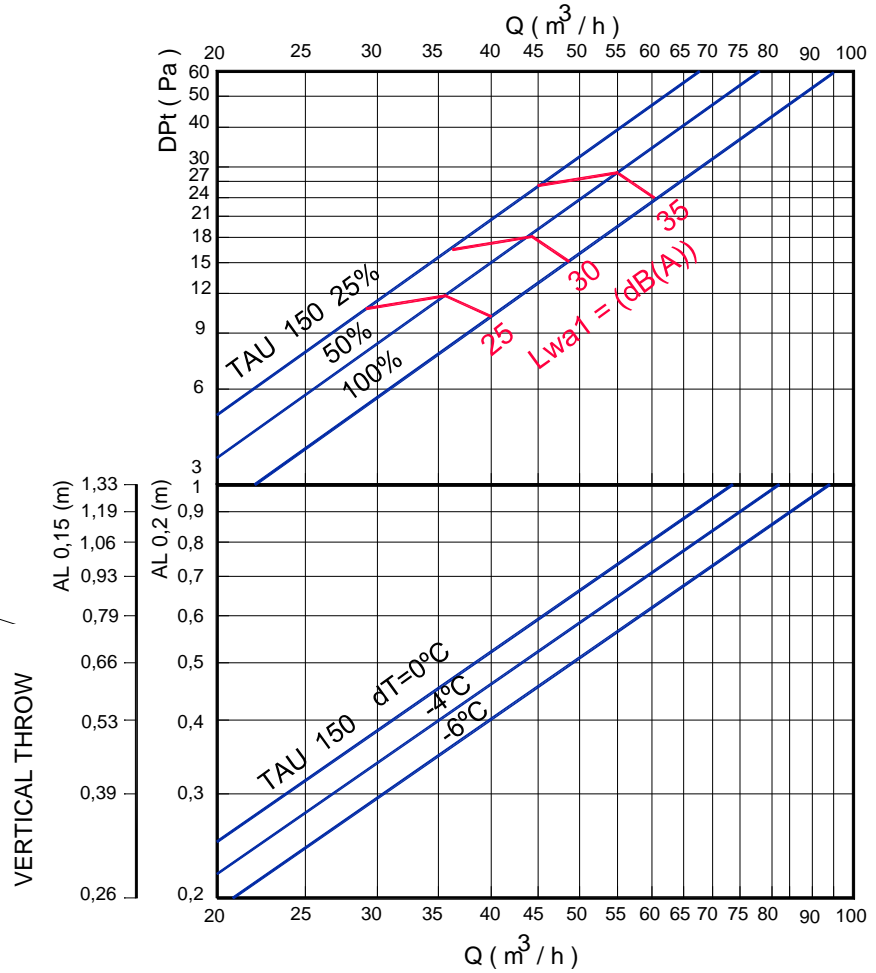
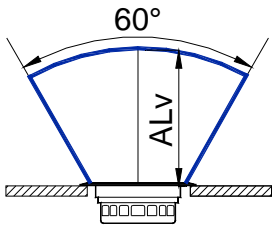
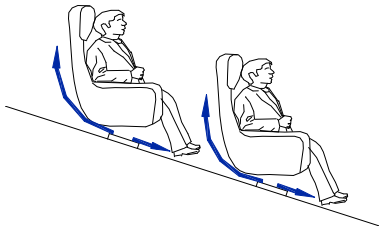
PRESURE LOSS AND SOUND POWER LEVEL

RECOMMENDED VELOCITY

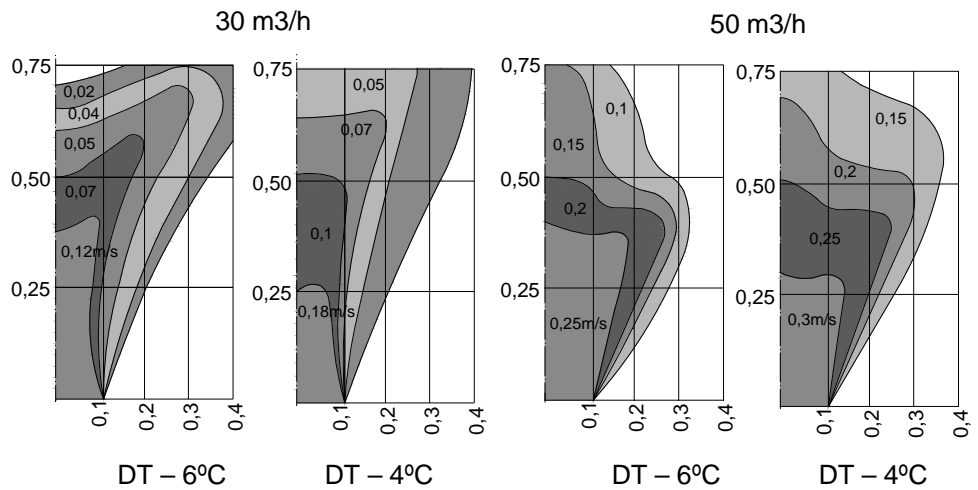
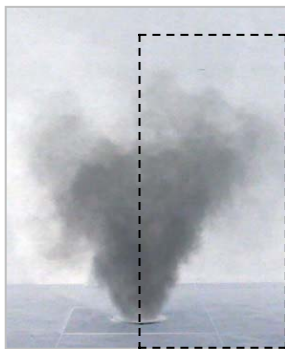
	min m/s	max m/s
	0,4	0,85

FREE FACE AREA (m2)

	m2	min m3/h	max m3/h
150	0.018	30	57



Speed profile TAU 150



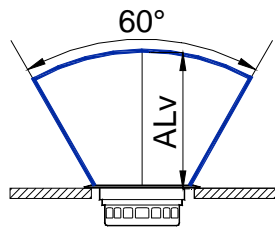
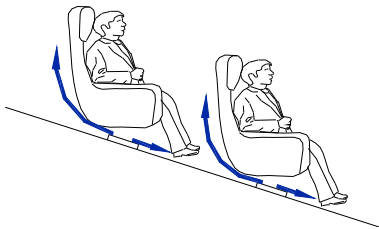


RECOMMENDED VELOCITY

	min m/s	max m/s
	0,4	0,85

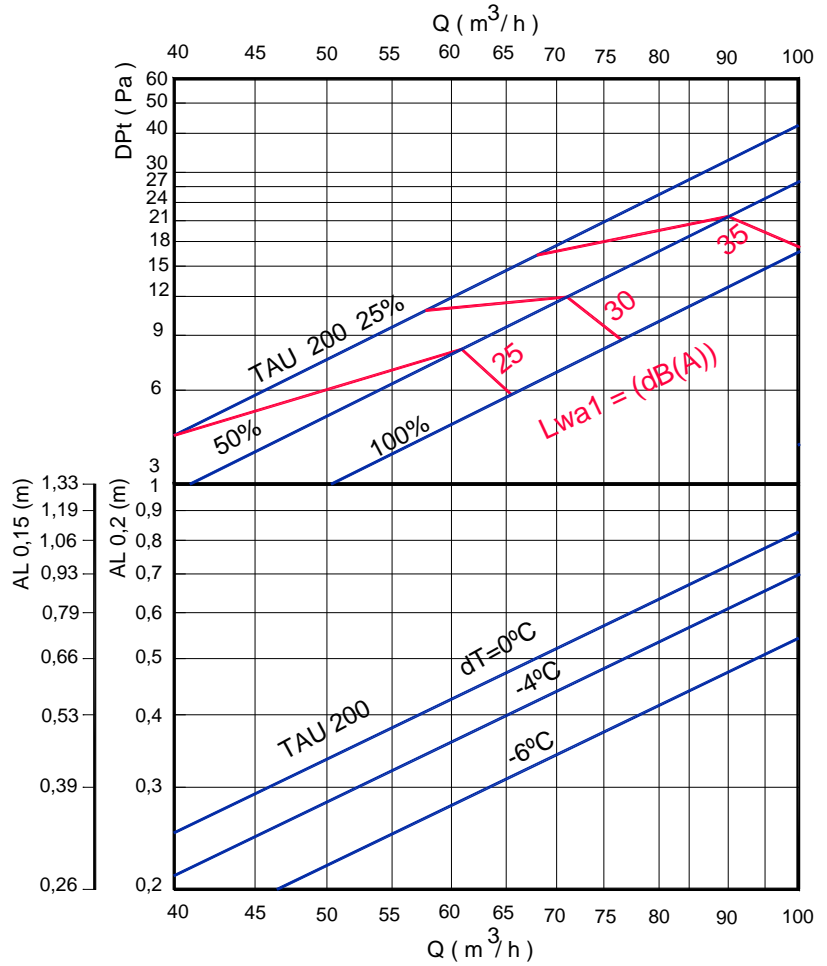
FREE FACE AREA (m2)

	m2	min m3/h	max m3/h
200	0.0314	60	100

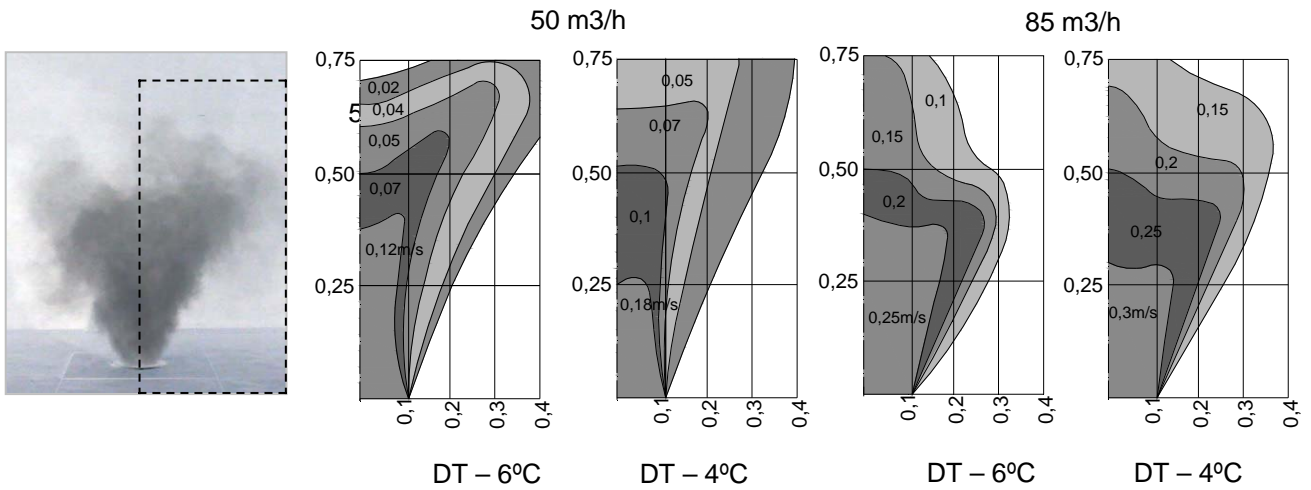


VERTICAL THROW

PRESURE LOSS AND SOUND POWER LEVEL



Speed profile TAU 200



Acoustic data by octave bands



Figure 1 Connection of the air duct to the bleachers



Figure 2 Model of bleachers with 8 diffusers

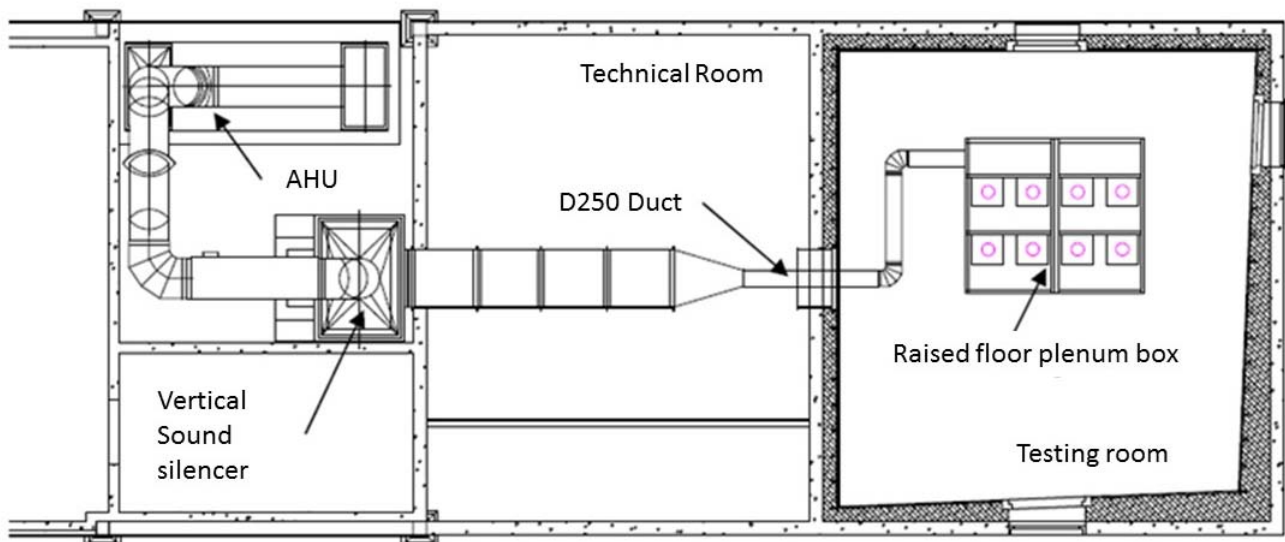


Figure 3 Principle scheme

TAU- 150

Q	Sound power level in dB (A). Octava band centre frequency in Hz											Pa
m3/h	63	125	250	500	1000	2000	4000	8000	GLOBAL	NC	NR	Dpt
30	<8	8	15	17	13	6	<8	2	20	15	20	5
40	5	13	20	22	18	11	5	7	25	20	25	10
50	12	20	27	29	25	18	12	14	32	30	30	16
60	15	23	30	32	28	21	15	17	35	30	35	23

TAU-200

Q	Sound power level in dB (A). Octava band centre frequency in Hz											Pa
m3/h	63	125	250	500	1000	2000	4000	8000	GLOBAL	NC	NR	Dpt
60	7	11	17	17	13	5	4	7	22	20	20	5
75	14	18	24	24	20	12	11	14	29	25	30	8
90	18	22	28	28	24	16	15	18	33	30	35	13
100	21	25	31	31	27	19	18	21	36	35	35	17