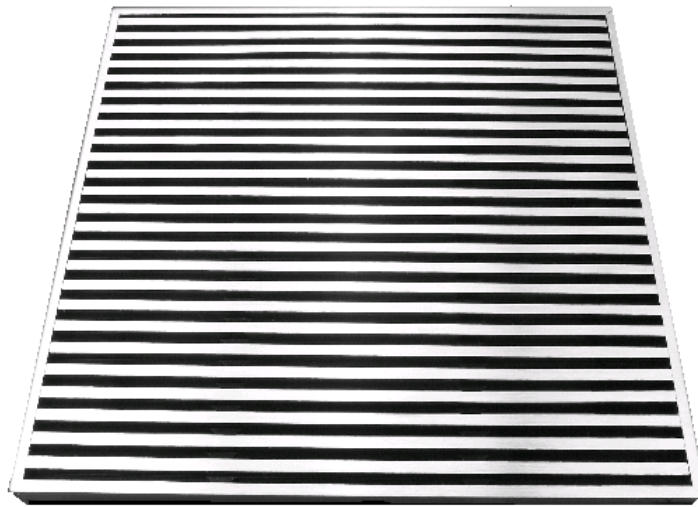


MADEL®



LMT-SHD linear floor grilles



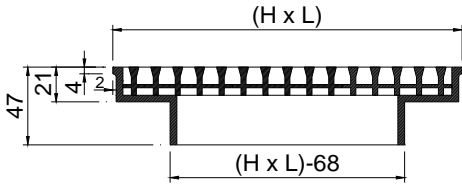
MADEL®

The **LMT-SHD** series grilles are designed to be used in air-conditioning, ventilation and heating.

Suitable for mounting in raised access floors on any applications where heavy foot or equipment traffic is to be experienced.

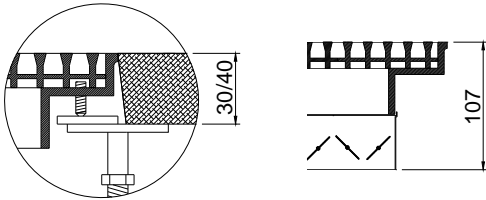
L15 classification (installation in areas with traffic of light vehicles, excluded the forklift trucks, according to test carried out by a credited independent laboratory, in conformity with the standard EN 1253-2).

LMT-SHD



(1)

LMT-SHD + SP-HD



CLASSIFICATION

LMT-SHD Linear floor grille with fixed bars parallels to the largest side (L size).

MATERIAL

The grille is constructed from aluminium.

ADDITIONAL ACCESSORIES

SP-HD Opposed blades volume damper from electro-zinc steel, in black colour. The damper is operated by an easily accessible key inside the grille.

FIXING SYSTEMS

- 1) Supported directly on the floor.
- (A) Adaptable to different floor thickness forwards four screws frontally accessible.

FINISHES

Shadowline - linished finish.

SPECIFICATION TEXT

Supply and mounting of linear floor grille with fixed bars parallels to the largest side series **LMT-SHD dim. LxH**, constructed from aluminium and shadowline – linished finish.

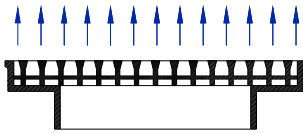
Manufacturer **MADEL**.

L15 classification in conformity with the standard EN 1253-2.

LMT-SHD

FREE FACE AREA m2.

L \ H	145	210	275	340	405	470	535	600
600	0,02	0,037	0,055	0,072	0,089	0,106	0,124	0,141
1000	0,035	0,066	0,096	0,132	0,157	0,187	0,217	0,269



RECOMMENDED VELOCITY.

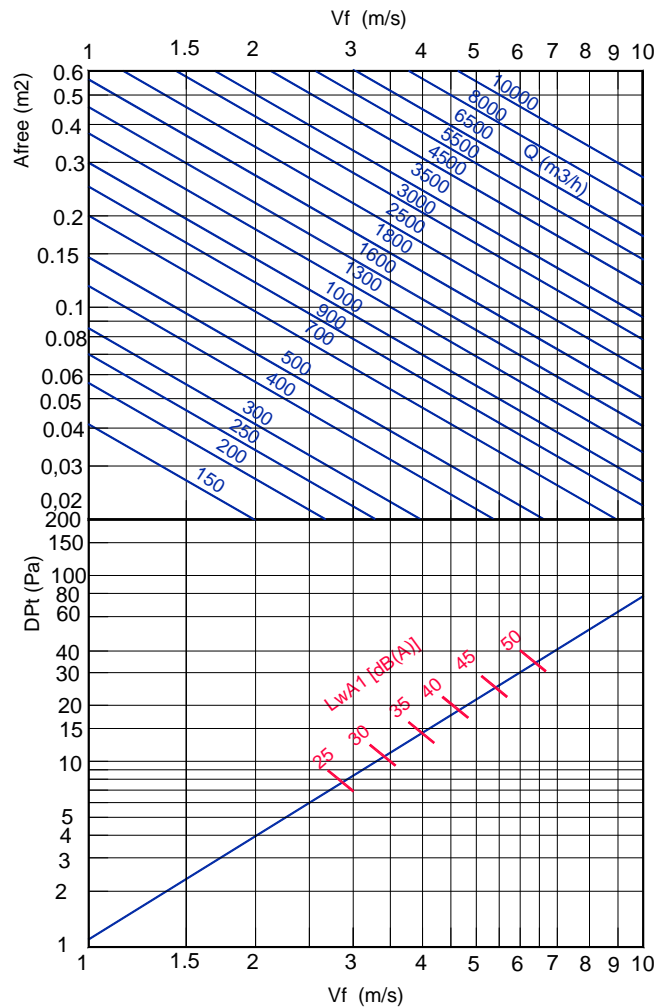
Vmin m/s	Vmax m/s
1,5	2,5

Determination of air flow.
Measuring the Vf in different points
of the grille, we find the Vfmed.

$$Q \text{ (l/s)} = V_{\text{fmed}} \text{ (m/s)} * A_{\text{free}} \text{ (m}^2) * 1000$$

$$Q \text{ (m}^3\text{/h)} = V_{\text{fmed}} \text{ (m/s)} * A_{\text{free}} \text{ (m}^2) * 3600$$

FREE VELOCITY, PRESSURE LOSS AND SOUND POWER LEVEL.



LMT-SHD

