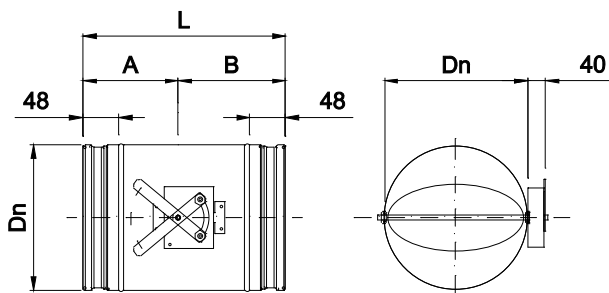




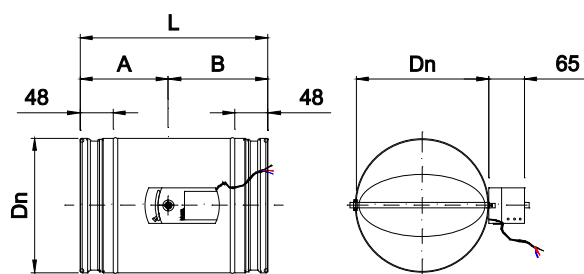
SCC serrande di regolazione per condotti circolari

Le serrande della serie **SCC** sono progettate per la regolazione della portata aria e della pressione, in impianti di aria condizionata, ventilazione e riscaldamento.
Serrande di regolazione a tenuta, predisposte per il montaggio a canale circolare.

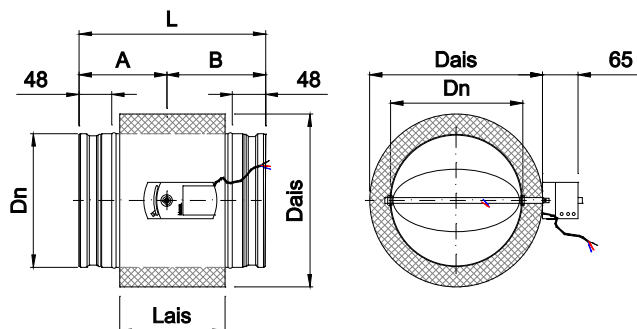
SCC-MA



SCC-MO



SCC-.../AIS/



CLASSIFICAZIONE

SCC-R Serranda circolare di regolazione dell'aria.

SCC-E Serranda circolare di regolazione dell'aria con connessione a canale secondo norma EN-1506. Guarnizione in gomma su entrambe le estremità per migliorare la tenuta della connessione. Cassa e pala a tenuta in conformità norma EN-1751.

100 < D(Ø) < 125 :

EN-1751 Cassa Classe C, Pala Classe 3

150 < D(Ø) < 400 :

EN-1751 Cassa Classe C, Pala Classe 4

.../MA/ Comando manuale.

.../MO/ Predisposizione alla motorizzazione.

.../AIS/ Isolamento termo-acustico.

MATERIALE

Cassa e pala costruite in acciaio zincato e cuscinetti in gomma. Guarnizione in EPDM.

D	Dn	Dais	L	Lais	A	B
100	98	178	265	150	105	160
125	123	203	265	150	105	160
150	148	228	265	150	105	160
160	158	238	265	150	105	160
200	198	278	295	180	130	165
250	248	328	335	220	145	190
315	313	393	345	230	155	190
355	353	433	400	285	180	220
400	398	433	420	305	190	230

Siemens GDB/GLB



Siemens GMA



Belimo LM/NM



Belimo LF/NF



SERVOMOTORE

Servomotore ON/OFF

- GDB141.1E** 24 VAC/VDC 5N Siemens actuator.
- GDB341.1E** 100... 230 VAC 5N Siemens actuator.
- LM24A** 24 VAC/VDC 5N Belimo actuator.
- LM230A** 230 VAC 5N Belimo actuator.

Servomotore ON/OFF con fine corsa

- GDB146.1E** 24 VAC/VDV 5N 2FC Siemens actuator.
 - GDB346.1E** 100...230 VAC 5N 2FC Siemens actuator.
 - LM24A-S** 24 VAC/VDC 5N 1FC Belimo actuator (*)
 - LM230A-S** 5N 1FC Belimo actuator (*)
- * Attuatori Belimo con 1 fine corsa, per 2 contatti.
Per chiedere

Servomotore ON/OFF con ritorno a molla

- GMA121.1E** 24 VAC/VDC 7N Siemens actuator.
- GMA321.1E** 230 VAC 7N Siemens actuator.
- LF-24** 24 VAC/VDC 4N Belimo actuator.
- LF-230** 230 VAC 4N Belimo actuator.

Servomotore Proporzionali

- GDB161.1E** 24 VAC/VDC 5N Siemens actuator.
- LM24A-SR** 24 VAC/VDC 5N Belimo actuator.
- LM230A-SR** 230 VAC 5N Belimo actuator.

Communicating actuators

Consultare modelli di servomotore con protocolli di comunicazione Modbus / KNX / LONWorks e Bacnet..

TF



RDG 400



**CO2-WP
CO2-WR**



CO2-D



OS-360



CONTROLLO TEMPERATURA

TF Termostato a fili a cambio di modo freddo / caldo manuale, per il controllo della temperatura di 1 zona con serrande con servomotore On/Off .

RDG 400 Controllo di temperatura ambiente proporzionale
0...10 vcc aliment. 24vac con display digitale retroilluminato, selettore confort/eco/spento. Per serranda con attuatore proporzionale.

CO2-WP Sonde di CO2 proporzionali (Richiedono attuatore proporzionale). Sonda ambiente a parete 24 vdc-vac. Visualizzazione a LED. Uscite 0-10Vdc. Setpoint 600- 800 -1000 ppm. IP30.

CO2-D Sonde di CO2 proporzionali (Richiedono attuatore proporzionale). Sonda per canale 24 vdc-vac con un'uscita 0-10Vdc, IP54.

CO2-WR Sonde di CO2 con relé (Richiedono attuatore ON/OFF). Sonda ambiente a parete 24 vdc-vac. Visualizzazione a LED. Uscita digitale (relé 5A) Setpoint 800- 1000 -1200 ppm.. IP30.

OS-360 Sensore di presenza. Sensore di movimento omnidirezionale a soffitto, per il controllo di elementi terminali HVAC. Alimentazione 24 Vac/Vdc. Uscita di contatto pulito parametrizzabile.

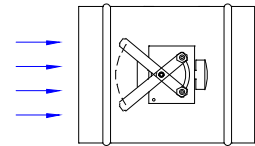
SISTEMI DI FISSAGGIO

- 1) La cassa della serranda é progettata per essere montata su canali circolari secondo norma EN-1506.

SPECIFICHE PER CAPITOLATO

Fornitura e posa in opera serranda di regolazione della portata aria da installare a canale circolare con a comando manuale serie **SCC-MA diam. 100**, con connessione a canale secondo norma EN-1506. Con guarnizione in gomma ad entrambe le estremità per migliorare la tenuta della connessione.

Serranda a tenuta in conformità norma EN-1751. Cassa Classe C, Pala 3. Costruita in acciaio zincato e bocche in nylon. Marca **MADEL**.



VELOCITÀ NEL COLLO, PERDITA DI CARICO E POTENZA SONORA.

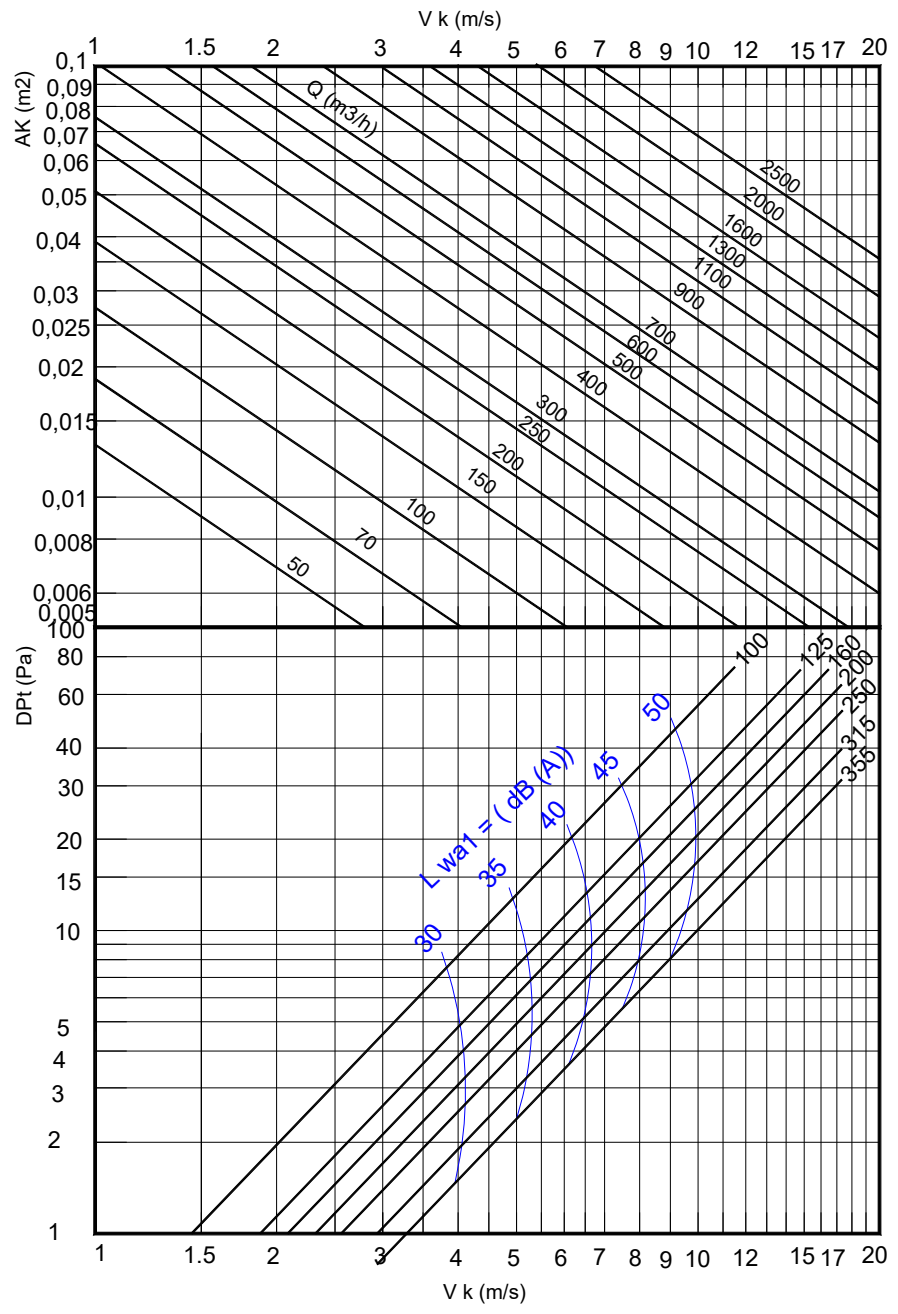
SEZIONE DEL COLLO m2..

D	Ak(m2)
100	0,0078
125	0,0123
160	0,0201
200	0,0314
250	0,0491
315	0,0779
355	0,0962

VALORI DI CORREZIONE PER DPt : Kp

α°	0°	15°	30°	45°	60°
Kp	1	1,5	8	20	140

$DPt' = Kp \times DPt$

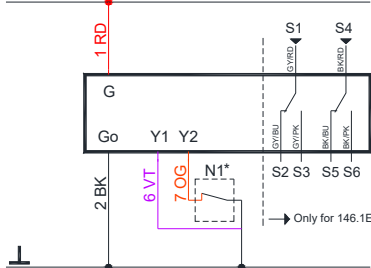


ON/OFF – 3P CONTROL.

GDB 14..1E

Open-close, Single wire control

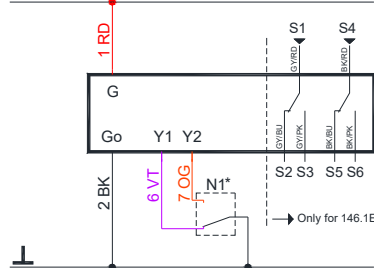
AC 24 V
 DC 24 V ... 48 V ...



GDB 14..1E

Open-close, Two wire control

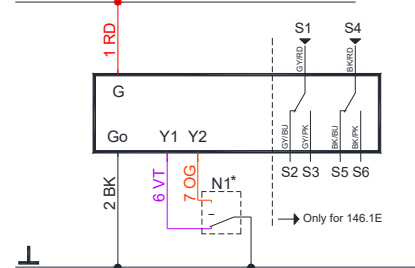
AC 24 V
 DC 24 V ... 48 V ...



GDB 14..1E

Three-position control

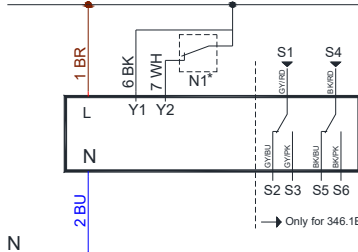
AC 24 V
 DC 24 V ... 48 V ...



GDB 34..1E

Open-close, Single wire control

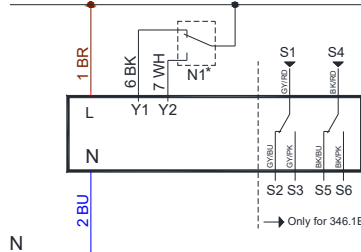
AC 100 ... 240 V



GDB 34..1E

Open-close, Two wire control

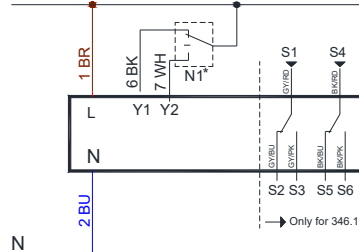
AC 100 ... 240 V



GDB 34..1E

Three-position control

AC 100 ... 240 V

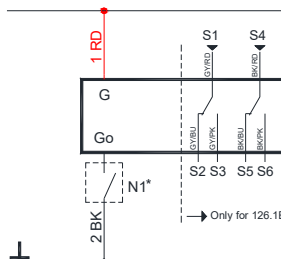


SPRING RETURN - ON/OFF – Two-position control

GMA 121.1E

Two-position control

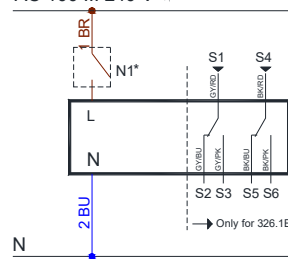
AC 24 V
 DC 24 V ... 48 V ...



GMA 321.1E

Two-position control

AC 100 ... 240 V

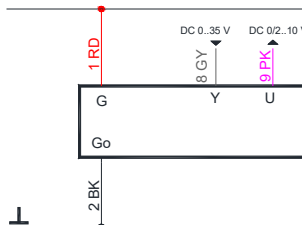


MODULATING control 0-10 V

GDB 16..1E

Modulating control

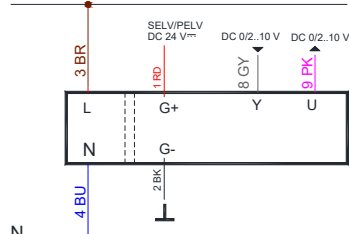
AC 24 V
 DC 24 V ... 48 V ...



GDB 36..1E

Modulating control

AC 100 ... 240 V



N1*. Accessory control. See wiring diagrams accessories.

Wiring	Code	N°	Color	Description	
Actuators AC 24 V DC 24..48V	G	1	RD Red	System potential 24 AC/DC	
	G0	2	BK Black	System Neutral	
	Y1	6	VT Purple	Positioning AC/DC 0V. cw	
	Y2	7	OG Orange	Positioning AC/DC 0V. ccw	
	Y	8	GY Grey	Signal in (0-10V)	
	U	9	PK Pink	Signal out (0-10 V)	
	Actuators AC 230 V	L	3	BR Brown	Line 100 .. 240 AC
		N	4	BU Blue	Neutral conductor
		Y1	6	BK Black	Positioning AC 230V. cw
Y2		7	WH White	Positioning AC 230V. ccw	
G+		1	RD Red	Potential aux. 24 AC/DC	
G-		2	BK Black	Neutral aux. 24 AC/DC	
Y		8	GY Grey	Signal in (0-10V)	
U	9	PK Pink	Signal out (0-10 V)		
Auxiliary contacts	Q11	S1	GY/RD	Input switch A	
	Q12	S2	GY/BU	Contact NC switch A	
	Q14	S3	GY/PK	Contact NO switch A	
	Q21	S4	BK/RD	Input switch B	
	Q22	S5	BK/BU	Contact NC switch B	
	Q24	S6	BK/PK	Contact NO switch B	

This information is provided by way of indication. Consult the manufacturer catalogue for all updated documentation.

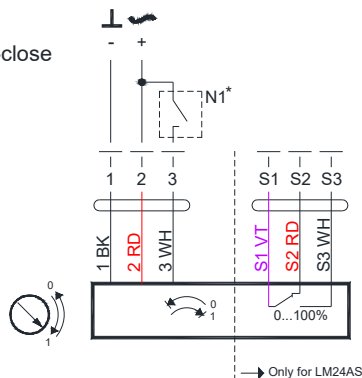
<https://www.buildingtechnologies.siemens.com/bt/global/en/products/HVAC-Products/Damper-actuators/Actuators-for-HVAC-applications/Pages/Actuators-for-HVAC-applications-default.aspx>

BELIMO Wiring diagrams

ON/OFF – 3P CONTROL.

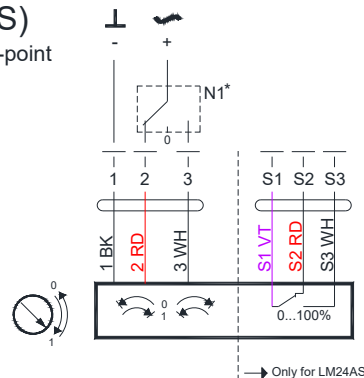
LM-24A..(S)

AC/DC 24 V, Open-close



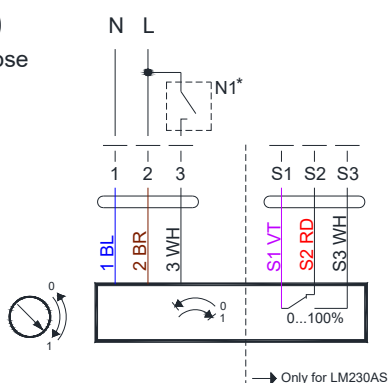
LM-24A..(S)

AC/DC 24 V, 3-point



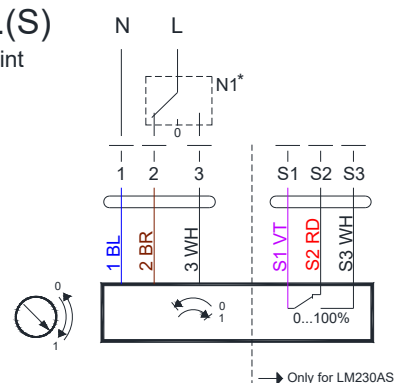
LM-230A..(S)

AC 230 V, Open-close



LM-230A..(S)

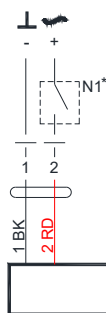
AC 230V, 3-point



SPRING RETURN - ON/OFF – Two-position control

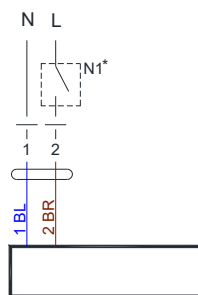
LF24

AC/DC 24 V, Open-close



LF230

AC 230 V, Open-close



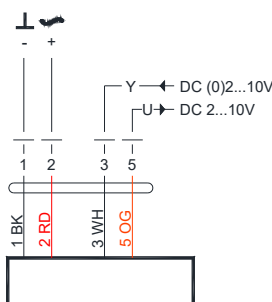
N1*. Accessory control. See wiring diagrams accessories.

Wiring	Code	N°	Color	Description
Actuators Open-close AC 24 V _{AC} DC 24...48V	-	1	BK Black	System Neutral
	+	2	RD Red	System potential 24 AC/DC
		3	WH White	Positioning AC/DC 0V.
Actuators modulating AC-DC 24 V AC 230V	-	1	BK Black	System Neutral
	+	2	RD Red	System potential 24 AC/DC
		3	WH White	Signal in (0) 2-10V
		5	OG Orange	Signal out 2-10V
Actuators AC 230 V _{AC}	L	1	BU Blue	Line 100 .. 240 AC
	N	2	BR Brown	Neutral conductor
	G+	1	BK Black	Neutral aux. 24 AC/DC
	G-	2	RD Red	SG..24
	Y	3	WH White	Signal in (0-10V)
	5	OG Orange	Signal out (0-10 V)	
Auxiliary contacts	S1	S1	VT Violet	Input switch A
	S2	S2	RD Red	Contact NC switch A
	S3	S3	WH White	Contact NO switch A

MODULATING control 0-10 V

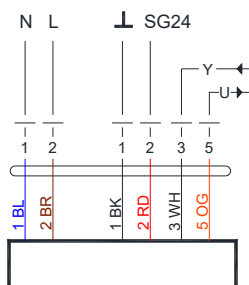
LM24A-SR

AC/DC 24 V, modulating



LM230A-SR

AC 230 V, Open-close



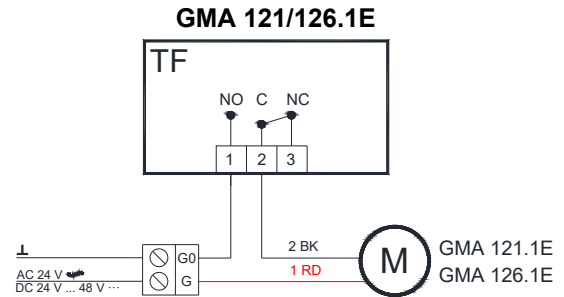
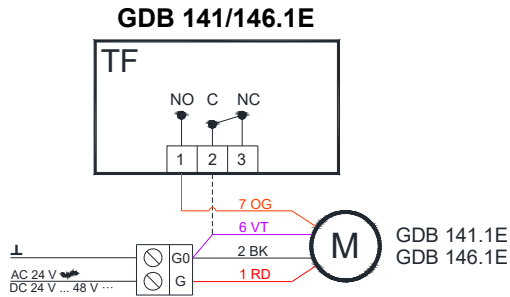
This information is provided by way of indication. Consult the manufacturer catalogue for all updated documentation.

<http://www.belimo.ch/CH/EN/PDF/index.cfm>

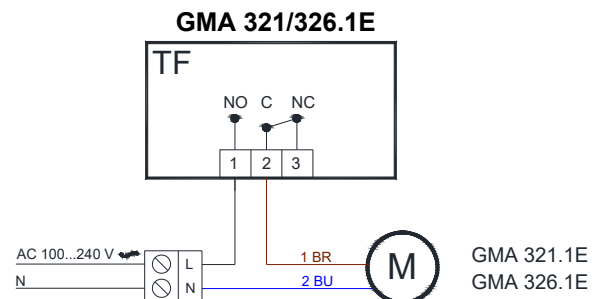
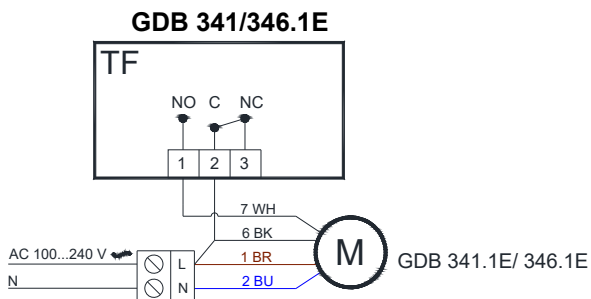
TF Wiring diagrams

TF + SIEMENS actuators

AC/DC 24 V - ON/ OFF control

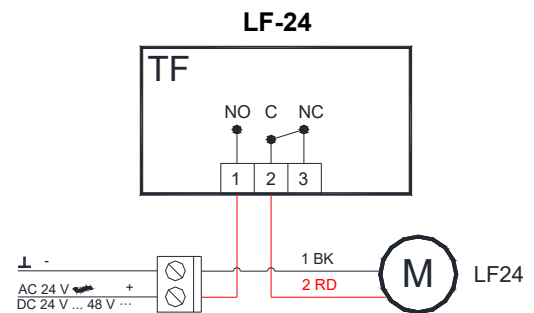
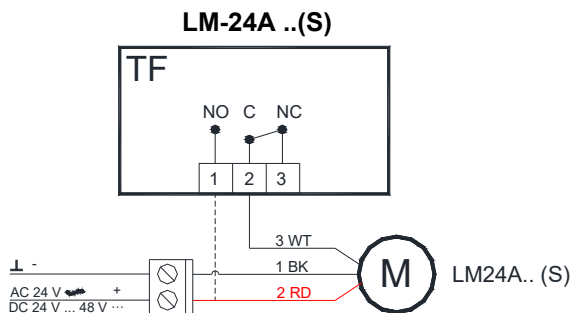


AC 230 V - ON/ OFF control

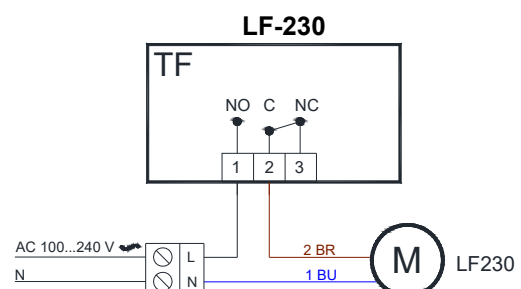
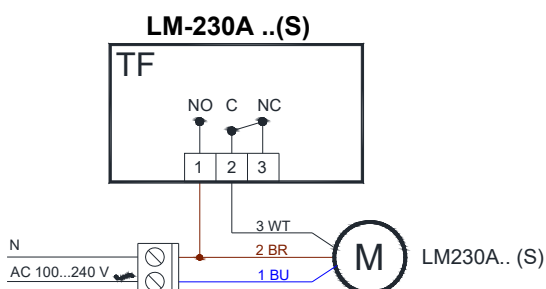


TF + BELIMO actuators

AC/DC 24 V - ON/ OFF control



AC 230 V - ON/ OFF control



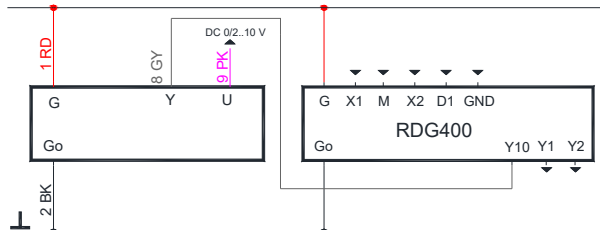
RDG400 Wiring diagrams

RDG 400 + SIEMENS actuators

Modulating control + manual changeover

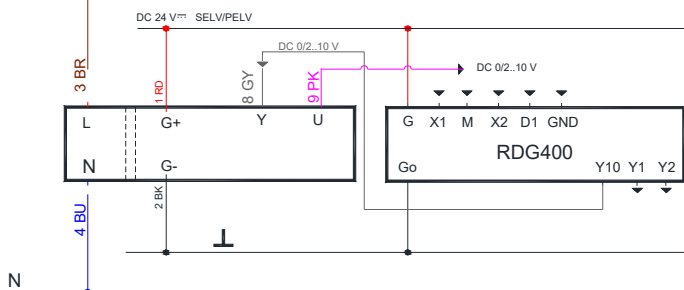
GDB 161.1E

AC 24 V
DC 24 V ... 48 V ...



GDB 361.1E

AC 100 ... 240 V

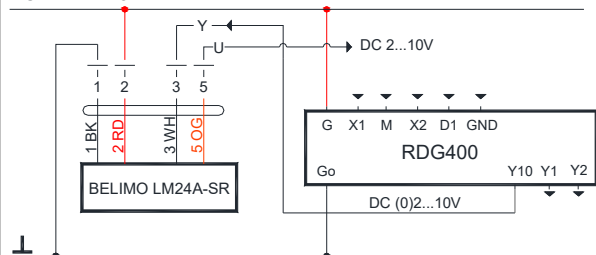


RDG 400 + BELIMO actuators

Modulating control + manual changeover

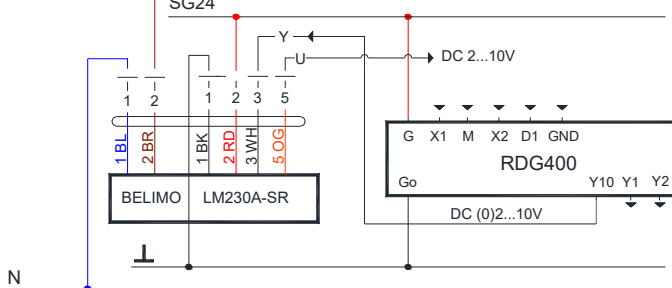
LM-24A -SR

AC 24 V
DC 24 V ... 48 V ...



LM230A-SR

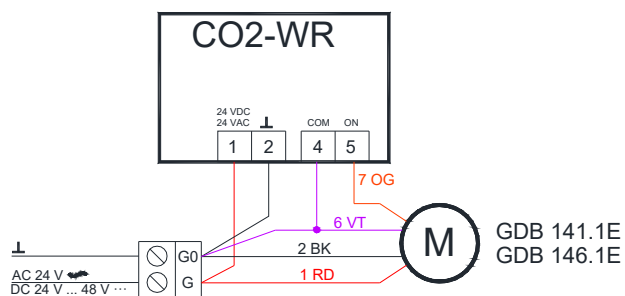
AC 100 ... 240 V



CO2-WR Wiring diagrams

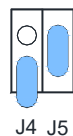
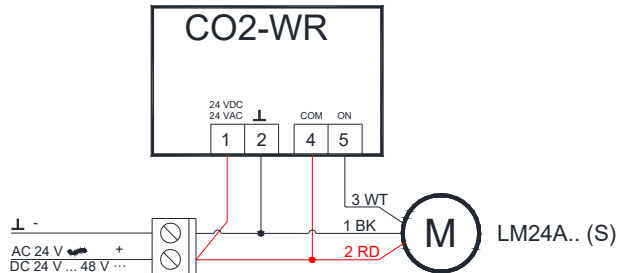
CO2-WR+ SIEMENS GDB 141.1E

On/OFF control



CO2-WR+ BELIMO LM24A.. (S)

On/OFF control



J4 J5

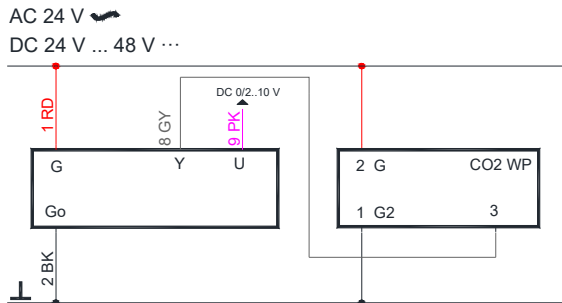
	J4	J5	Relay
800 ppm	disconnected	disconnected	CO2 > 900 ppm. Relay ON; CO2 < 700 ppm Relay OFF
1000 ppm	connected	disconnected	CO2 > 1100 ppm. Relay ON; CO2 < 900 ppm Relay OFF
1200 ppm (default)	disconnected	connected	CO2 > 1200 ppm. Relay ON; CO2 < 1100 ppm Relay OFF
1400 ppm	connected	connected	CO2 > 1500 ppm. Relay ON; CO2 < 1300 ppm Relay OFF

CO2-WP Wiring diagrams

CO2-WP + SIEMENS actuators

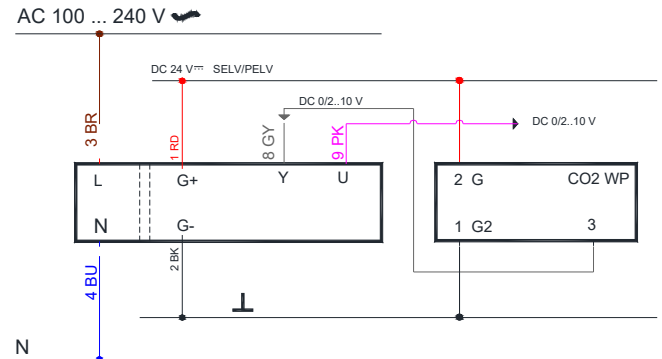
AC/DC 24 V – Modulating control

GDB 161.1E



AC 230 V – Modulating control

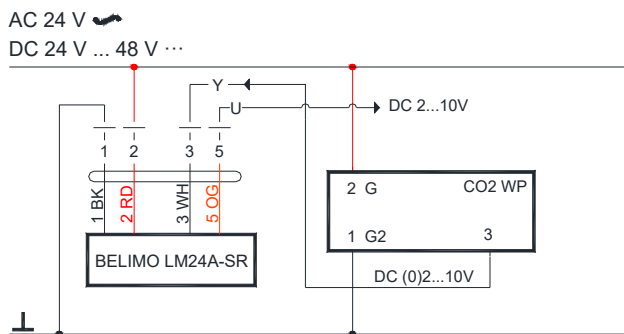
GDB 361.1E



CO2-WP + BELIMO actuators

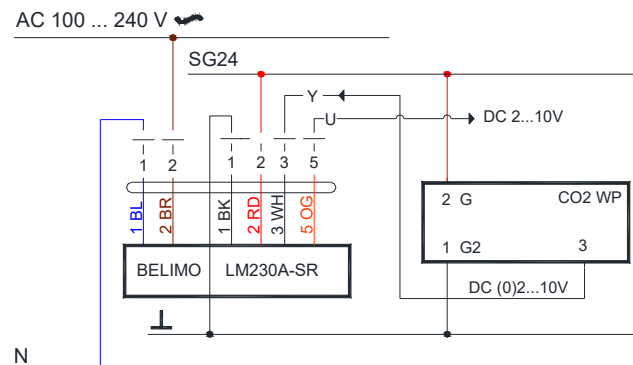
AC/DC 24 V – Modulating control

LM24A-SR



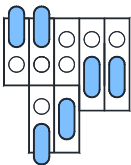
AC 230 V – Modulating control

LM230A - SR



CO2-WP Setting

J3 J1 J2 S1 S2



J4 J5

	J1	J2
0-10 VDC(default)	disconnected	disconnected
2-10 VDC	connected	disconnected

	J3
PID out put (default)	disconnected
Linear output	connected

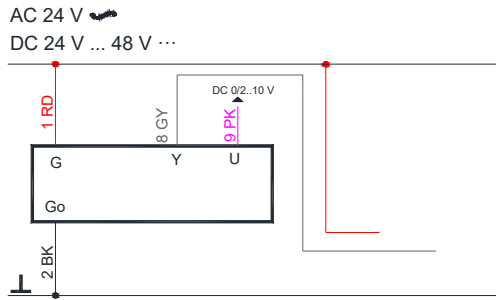
	J4	J5
350 ppm	disconnected	disconnected
500 ppm	connected	disconnected
800 ppm (default)	disconnected	connected
1200 ppm	connected	connected

CO2-D Wiring diagrams

CO2-WD + SIEMENS actuators

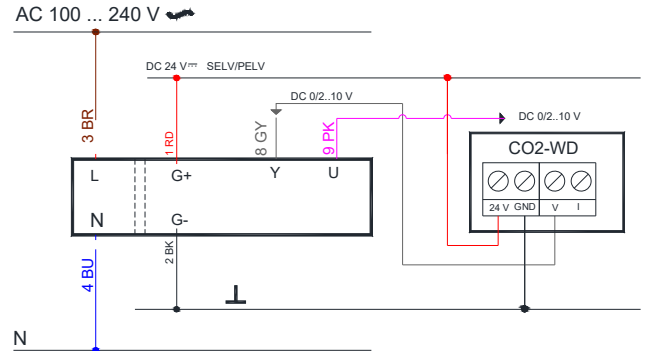
AC/DC 24 V – Modulating control

GDB 161.1E



AC 230 V – Modulating control

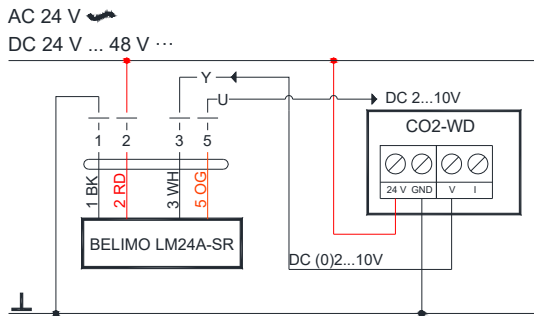
GDB 361.1E



CO2-WD + BELIMO actuators

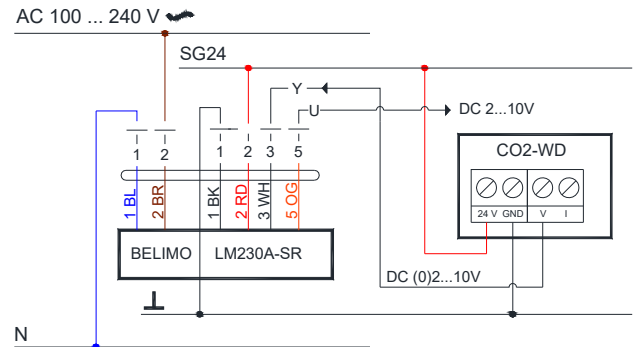
AC/DC 24 V – Modulating control

LM24A-SR



AC 230 V – Modulating control

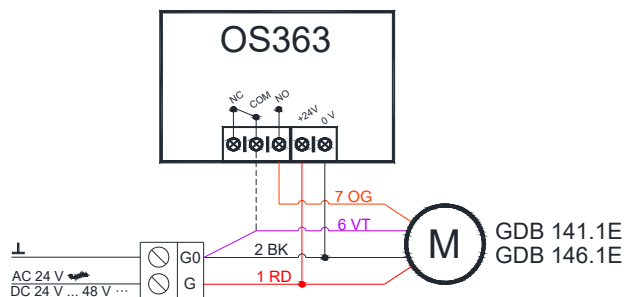
LM230A - SR



OS-360 Wiring diagrams

OS360+ SIEMENS GDB 141.1E

On/OFF control

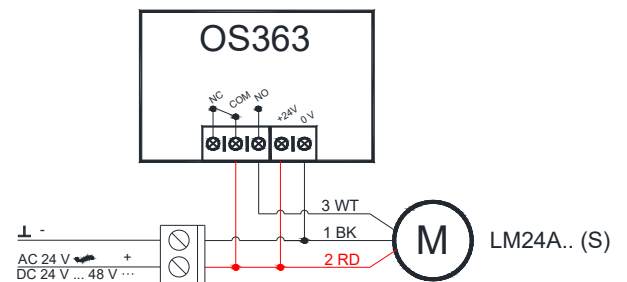


DELAY SETTING



OS360+BELIMO LM24A.. (S)

On/OFF control



	A	B	C	D	E	F
ON	0 sec	10 sec	30 sec	1 min	5 min	10 min
OFF	10 sec	1 min	5 min	10 min	20 min	30 min