



LINKIN Series

MADEL[®]
we shape the air



LINKIN

DESIGN AND AESTHETICS

- Designed for air supply/return in air conditioning and ventilation installations.
- Wall or ceiling mounting, hiding the frame with plaster and leaving only the air slot visible.
- Formation of continuous lines, with active and inactive zones, without breaking the aesthetic uniformity of the set.
- Perfect integration. Only the air slot is visible.
- Unique installations.

PERFORMANCE

- High induction rate for quick and effective air mixing in the room.
- Low noise level and medium-long range of the air jet.

INSTALLATION

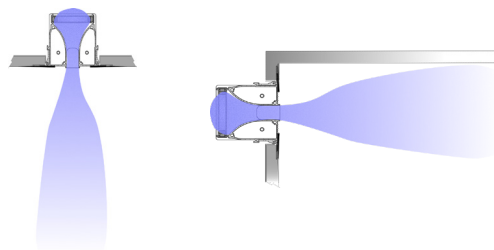
Recommended for heights from 2.6 to 4 meters. Air stream reach from 5 to 16 meters.

FOR CEILING AND FOR WALL



For **ceiling installations**, vertical projection for medium to high-height setups.

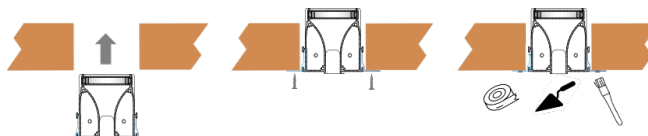
For **wall installations**, suitable for spaces requiring air throw distances greater than 5 meters. With or without Coanda effect, depending on the distance between the diffuser and the ceiling.



INSTALLATION TYPES

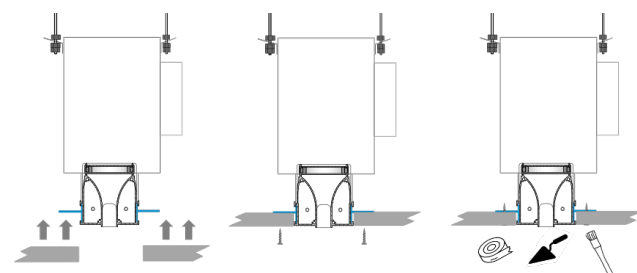
Installation on **closed ceiling** or for ceilings with **thicknesses different from 13/15 mm**.

For LINKIN and fixing (T)



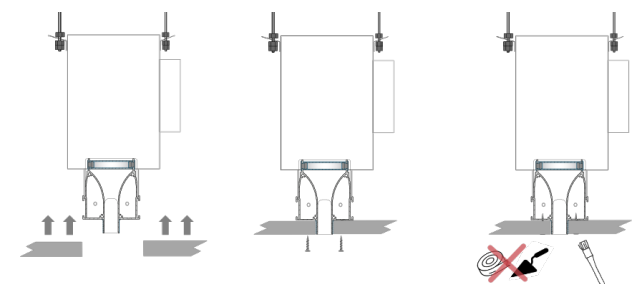
Installation on **open ceilings**. The ceiling is installed after fixing the diffuser. For false ceiling panels of 13/15 mm thickness.

For LINKIN and fixing (L)



Optimized installation on open ceilings. The ceiling is installed after fixing the diffuser. For false ceiling panels of 13/15 mm thickness. No crack tape required.

For LINKIN-EZ



PRODUCT RANGES

LINKIN



- Slot 15 to 50 mm
- 1-way linear nozzle
- Concealed installation in ceiling or wall
- For masonry walls or lightweight metal frame structures
- Airflow from 50 to 1400 m³/h

LINKIN-EZ



- Slot 15 to 50 mm
- 1-way linear nozzle
- Concealed installation in ceiling or wall
- For lightweight metal frame walls
- Airflow from 50 to 1400 m³/h



MADEL®
we shape the air