

A black and white photograph of a modern interior space. The background is a large wall with a vertical wood grain texture. Above the wall, a dark curved ceiling features several pendant lights with conical shades and wooden bases. In the foreground, there is a dark, modular sofa and a light-colored, octagonal table. The floor is made of light-colored wood planks.

# LAVSeries

**MADEL®**  
we shape the air



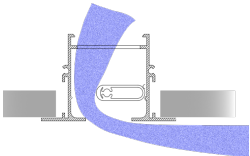
## INSTALLATION

Recommended for heights from 2.6 to 4 m.

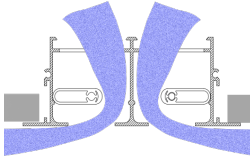
### FOR CEILING



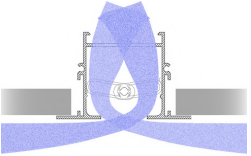
For ceiling installations, ensuring the Coanda effect at low flow rates in cooling and avoiding stratification in heating.



Airflow in 1 direction (adjustable right - left)

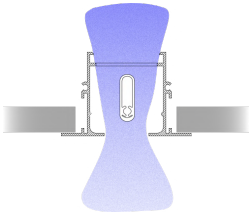


Airflow in 2 directions



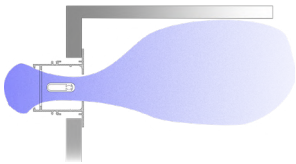
Alternating airflow in 2 directions. For greater induction and air control

For ceiling installations and vertical discharge with curtain effect.



### FOR WALL

For wall installations, with or without Coanda effect depending on the position of the diffuser relative to the ceiling.



## LAV-15 & 24

### DESIGN AND AESTHETICS

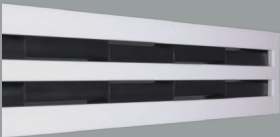
- Slot of 15-24 mm, adjustable fins every 100 mm.
- Reduced frames for less visual impact.
- Allows the formation of continuous lines, combining active and inactive zones without breaking the uniformity of the set.
- LAV-24-FIN version for hidden installation, for superior architectural integration.

### PERFORMANCE

- High induction rate for quick and effective air mixing in the room.
- Optimal for Constant Air Volume (CAV) or Variable Air Volume (VAV) installations, ensuring air stream stability over a wide flow range.

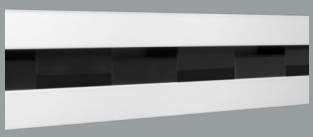
## PRODUCT RANGES

### LAV-15



- 15 mm slot
- 1 to 4-way diffuser
- Surface-mounted on ceiling or wall
- Airflow from 60 to 800 m³/h

### LAV-24



- 24 mm slot
- 1 to 4-way diffuser
- Surface-mounted on ceiling or wall
- Airflow from 80 to 1200 m³/h

### LAV-24-FIN



- 24 mm slot
- 1-way diffuser
- Concealed installation in ceiling or wall
- Airflow from 80 to 250 m³/h



**M A D E L**<sup>®</sup>  
we shape the air