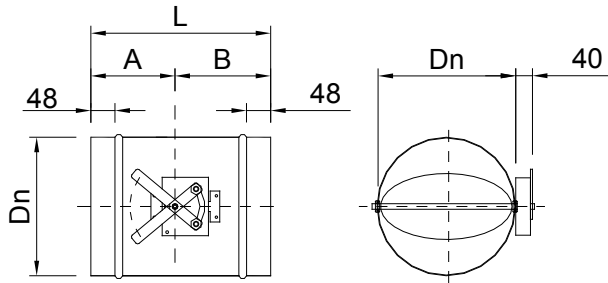


SCC CONTROL DAMPERS FOR CIRCULAR DUCT

MADEL®

The SCC series dampers are designed to be used for altering the flow volume rate and pressure in air-conditioning, ventilation and heating systems. Airtight damper suitable for circular duct mounting.

SCC - MA



D	Dn	L	A	B
100	98	265	105	160
125	123	265	105	160
150	148	265	105	160
160	158	265	105	160
200	198	295	130	165
250	248	335	145	190
315	313	345	155	190

CLASSIFICATION

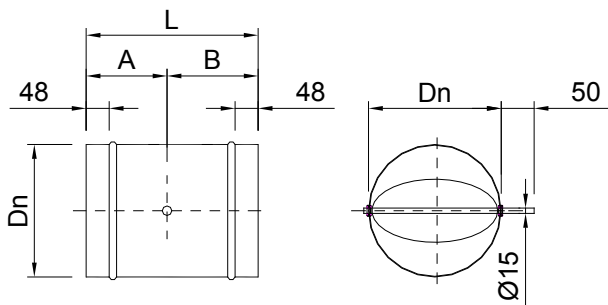
SCC-R /MA Circular damper with manual control lever.

SCC-E /MA Circular damper with air tightness joint and manual control lever.

SCC-R /MO Circular damper with special axle to motorise.

SCC-E /MO Circular damper with air tightness joint and special axle to motorise.

SCC - MO



D	Dn	L	A	B
100	98	265	105	160
125	123	265	105	160
150	148	265	105	160
160	158	265	105	160
200	198	295	130	165
250	248	335	145	190
315	313	345	155	190

MATERIAL

Casing and blade made from galvanised steel and bearings from rubber.

ADDITIONAL ACCESSORIES

TN08 -24 / 230 Servomotor at 24v or 230v.

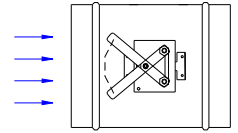
FIXING SYSTEMS

The casing of SCC damper has been designed in order to be jointed in circular ducts.

FINISHES

Galvanised steel.

SCC SERIES



NECK VELOCITY, PRESSURE LOSS AND SOUND POWER LEVEL.

NECK AREA m².

D	Ak(m ²)
100	0,0078
125	0,0123
160	0,0201
200	0,0314
250	0,0491
315	0,0779

CORRECTION FACTOR FOR DPT: Kp

∞°	0°	15°	30°	45°	60°
Kp	1	1,5	8	20	140

$$DPT' = Kp \times DPT$$

