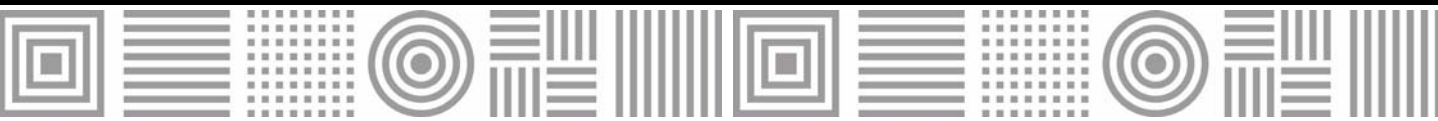




SKC-R rectangular constant air volume dampers



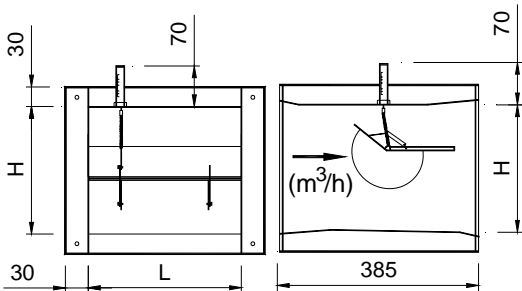
MADEL®

The **SKC-R** series dampers are designed to facilitate balancing of ventilation systems. Damper suitable for rectangular duct mounting.

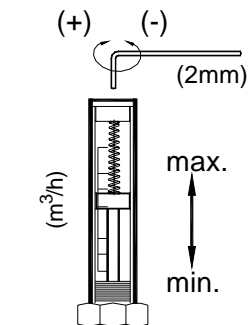
Those dampers maintain the constant air volume at varying pressures, caused by connection and disconnection of system parts, clogging of filters and ducts, wind effects, window opening etc.

SKC-R is an automatic damper independent of external energy sources. The damper is operated by an opposed opening force from a spring on the blade.

SKC-R



200x100	400x200	550x250
300x100	450x200	600x250
400x100	500x200	300x300
150x150	550x200	350x300
200x150	600x200	400x300
300x150	250x250	450x300
400x150	300x250	500x300
200x200	350x250	600x300
250x200	400x250	400x400
300x200	450x250	500x400
350x200	500x250	600x400
		600x600



CLASSIFICATION

SKC-R/ MA Damper with manual device for setting of one flow.

MATERIAL

Damper constructed from galvanized steel.
Tightness joint from rubber.

FIXING SYSTEMS

Connection into a rectangular duct.

FINISHES

Galvanized steel.

SPECIFICATION TEXT

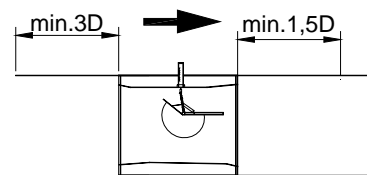
Supply and mounting of rectangular constant air volume damper to facilitate balancing of ventilation systems series **SKC-R/MA** LxH mm. Constructed from galvanized steel and tightness joint from rubber. Manufacturer **MADEL**.

SKC-R

TRANSVERSAL SECTION BxH (m2) (A face)

H \ B	200	250	300	350	400	450	500	550	600
100	0,02	0,025	0,03	0,035	0,04	0,045	0,05	0,055	0,06
150	0,03	0,04	0,045	0,052	0,06	0,67	0,075	0,082	0,09
200	0,04	0,05	0,06	0,07	0,08	0,09	0,1	0,11	0,12
250		0,062	0,075	0,087	0,1	0,11	0,12	0,137	0,15
300			0,09	0,105	0,12	0,135	0,15	0,165	0,18
400					0,16	0,18	0,2	0,22	0,24
600									0,36

FACE VELOCITY, PRESSURE LOSS AND SOUND POWER LEVEL



V (m/s)		P (Pa)
Vmin	3	40 < P < 1000
Vmax	10	200 < P < 1000

