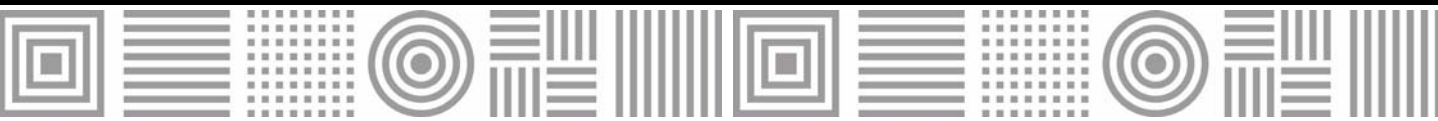




## FTR expanding grilles



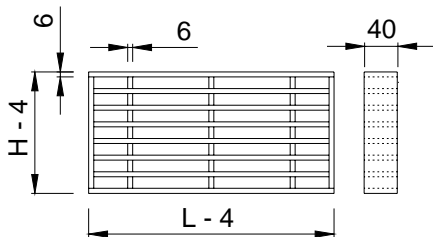
MADEL®

Expanding grilles classed EI 120 (integrity and insulation during 120 min), in accordance with the standards EN-1634-1, to allow ventilation through compartmentation elements.

**FTR** grilles expand at 120°C sealing the ventilation hole, to comply with the required regulations.



## FTR



## CLASSIFICATION

**FTR** Rectangular expanding grille classed EI 120.

## MATERIAL

Grille constructed from sodium silicate covered in PVC.

## FIXING SYSTEMS

1) Mounting into the wall opening.

## SPECIFICATION TEXT

Supply and mounting of expanding grille for ventilation through compartmentation elements classed EI 120 (integrity and insulation during 120 min), in accordance with the standards EN-1634-1series **FTR** dim. **LxH**, constructed from sodium silicate covered in PVC. Manufacturer **MADEL**.

## EXAMPLE

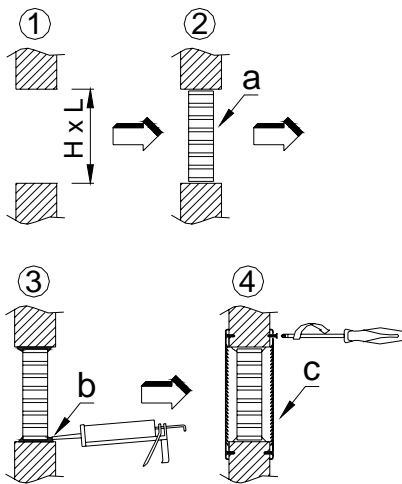
Ventilation of a storage room.

In accordance to fire regulations, set up fire resistance of the elements that delimit the fire sector.

To calculate the necessary openings for room ventilation.

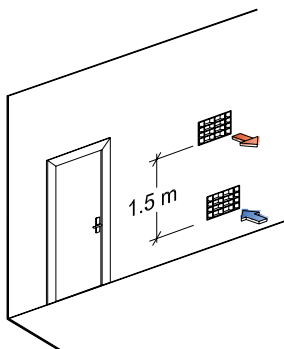
When storage rooms are ventilated through the common zone, partition located between each storage room and this zone must have at least two vertically separated openings of 1,5 m.

## Fixing



- a- Expanding grille
- b- Holes have to be plugged by expanding filler
- c- SCV Grille

## Example





Series FTR

L x H mm	A free m2
100x100	0,006
200x100	0,012
150x150	0,014
300x150	0,028
200x200	0,025
400x200	0,050
300x300	0,056
400x400	0,100